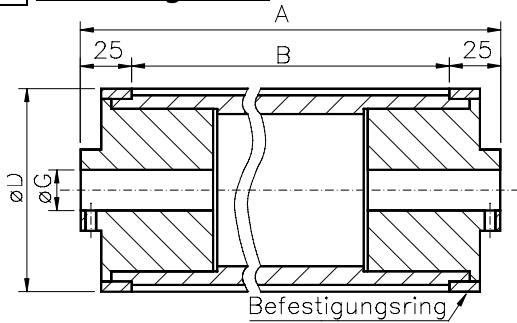


**FIBRILLATING INQUIRY**

**Address / Business Card**

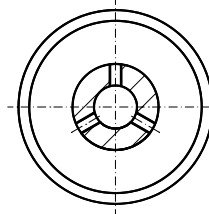
Name \_\_\_\_\_ E-Mail \_\_\_\_\_  
 Company \_\_\_\_\_ Final Product \_\_\_\_\_  
 Country \_\_\_\_\_ Fibrillating system \_\_\_\_\_  
 Phone \_\_\_\_\_ Tape Material \_\_\_\_\_

**Fibrillating Roller**



Flange Type A

Other  
(please specify)



\_\_\_\_\_  
 \_\_\_\_\_  
 \_\_\_\_\_

Max. Working Width (B) in mm		Diameter (D)	Max. Number of Grooves	
Bronze	Steel		Bronze	Steel
950	1150	80	24	28
1050	1250	100	32	36
1150	1350	115	36	40
1200	1400	125	42	46
1300	1450	150	50	56
1400	1700	175	58	64
1600	2000	200	68	74

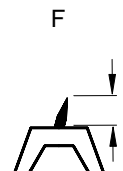
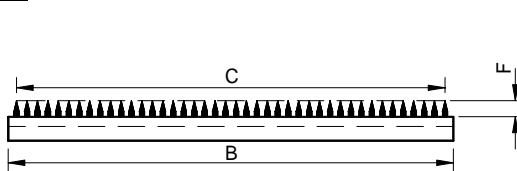
A= \_\_\_\_\_ (Standard is B+50) mm  
 B= \_\_\_\_\_ mm  
 D= \_\_\_\_\_ mm  
 G= \_\_\_\_\_ mm

Number of Grooves = \_\_\_\_\_

Bronze

Steel, hard-chromium plated

**Exchangeable Fibrillating Bars**



1 Row

2 Rows

\_\_\_\_\_ mm

C = \_\_\_\_\_ mm

Pin Density: \_\_\_\_\_ pins/cm

**Inclination (E)**  15°  30°(Standard)  other ..... °

**Staggering**  All no. 1  Staggered no. 1 + 2  Multi-staggering no. 1 - .....